

Don't turn your toddler over too soon

Travel safely with the 4 of Safely taking your toddler in the Car

When I take my toddler in the car...

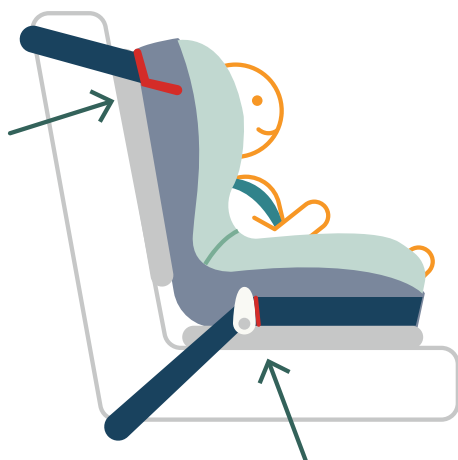
- 1 ...my toddler is always in a toddler car seat



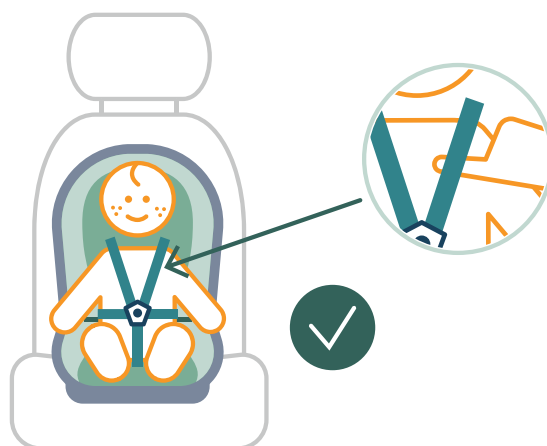
- 2 ...my toddler faces forward starting from 15 months



- 3 ...I pull the seat belt through the red or green dots



- 4 ...I tighten the straps of the toddler car seat



Check which milestone your child has reached at [kinderveiligheid.nl/mijlpalencheck](https://www.kinderveiligheid.nl/mijlpalencheck) and receive yet more advice and tips to help your child grow up safely.